

Collection Description Specification

DRAFT STANDARD FOR TRIAL USE:
Period: November 1, 2005 – October 31, 2006

Abstract: This draft standard defines a means of describing collections, where a collection is defined as an aggregation of items.

The draft standard takes the form of a Dublin Core Application Profile, a specification of how metadata terms from the Dublin Core metadata vocabularies and from other metadata vocabularies, some constructed for use in association with this Dublin Core application profile, are used to construct a description of a collection, in accordance with the DCMI Abstract Model.

It also specifies an XML binding for serializing such descriptions for interchange between applications.

A Proposed American National Standard
developed by the
National Information Standards Organization

Published by the National Information Standards Organization



NISO Press, Bethesda, Maryland, U.S.A.

DRAFT STANDARD SUBJECT TO CHANGE

About NISO Standards

This is a Draft Standard for Trial Use (DSFTU). A DSFTU is issued when, in the opinion of the Standards Committee and the SDC, there is a need for field experience before proceeding with balloting, or when balloting of a draft standard fails to reach consensus and reveals the need for field experience.

This is a draft standard and subject to change.

NISO standards are developed by the Standards Committees of the National Information Standards Organization. The development process is a strenuous one that includes a rigorous peer review of proposed standards open to each NISO Voting Member and any other interested party. Final approval of the standard involves verification by the American National Standards Institute that its requirements for due process, consensus, and other approval criteria have been met by NISO. Once verified and approved, NISO Standards also become American National Standards.

This standard may be revised or withdrawn at any time. For current information on the status of this standard contact the NISO office or visit the NISO website at:
<http://www.niso.org>

Published by

NISO Press
4733 Bethesda Avenue, Suite 300
Bethesda, MD 20814
www.niso.org

Copyright © 2005 by the National Information Standards Organization.

All rights reserved under International and Pan-American Copyright Conventions. For noncommercial purposes only, this publication may be reproduced or transmitted in any form or by any means without prior permission in writing from the publisher, provided it is reproduced accurately, the source of the material is identified, and the NISO copyright status is acknowledged. All inquires regarding translations into other languages or commercial reproduction or distribution should be addressed to: NISO Press, 4733 Bethesda Avenue, Suite 300, Bethesda, MD 20814.

ISSN: 1041-5635
ISBN: to be assigned

Contents

1	Purpose	1
2	Scope	1
3	References	1
4	Definitions	2
5	Abstract Model for Collections	2
6	Metasearch Collection Description Schema	4
6.1	Vocabularies/Namespaces used in this DCAP	5
6.2	Property Usage.....	5
6.3	Collection Properties	6
6.3.1	Collection Identifier [dc:identifier].....	6
6.3.2	Title [dc:title].....	7
6.3.3	Alternative Title [dcterms:alternative].....	8
6.3.4	Description [dcterms:abstract]	9
6.3.5	Size [dcterms:extent]	10
6.3.6	Language [dc:language]	10
6.3.7	Type [dc:type].....	11
6.3.8	Rights [dc:rights]	12
6.3.9	Access Rights [dcterms:accessRights].....	12
6.3.10	Accrual Method [dcterms:accrualMethod]	13
6.3.11	Accrual Periodicity [dcterms:accrualPeriodicity]	14
6.3.12	Accrual Policy [dcterms:accrualPolicy]	14
6.3.13	Custodial History [dcterms:provenance].....	15
6.3.14	Audience [dcterms:audience].....	16
6.3.15	Subject [dc:subject].....	17
6.3.16	Spatial Coverage [dcterms:spatial]	18
6.3.17	Temporal Coverage [dcterms:temporal]	19
6.3.18	Accumulation Date Range [dcterms:created]	19
6.3.19	Contents Date Range [cld:dateContentsCreated]	20
6.3.20	Subject Completeness [cld:subjectCompleteness].....	21
6.3.21	Collector [dc:creator].....	22
6.3.22	Owner [marcrel:OWN].....	23
6.3.23	Is Accessed Via [cld:isAccessedVia]	23
6.3.24	Sub-collection [dcterms:hasPart]	24
6.3.25	Super-collection [dcterms:isPartOf]	25
6.3.26	Catalogue or description [dc:description].....	26
6.3.27	Associated collection [dc:relation].....	26
6.3.28	Associated publication [dcterms:isReferencedBy].....	27
6.4	Subject Completeness Indicator Properties	28
6.4.1	Completeness Subject [cld:completenessSubject].....	28
6.4.2	Completeness Level [cld:completenessLevel].....	29
6.5	Encoding Schemes.....	30
6.5.1	Uniform Resource Identifier [dcterms:URI]	30
6.5.2	ISO639-2 [dcterms:ISO639-2]	30
6.5.3	Collection Type Vocabulary [cld:CollType]	30

6.5.4	Collection Description Type Vocabulary [cld:CollDescType]	31
6.5.5	DCCD Accrual Method [cld:DCCDAccrualMethod]	31
6.5.6	DCCD Accrual Periodicity [cld:DCCDAccrualPeriodicity]	31
6.5.7	DCCD Accrual Policy [cld:DCCDAccrualPolicy]	32
6.5.8	Library of Congress Subject Headings (LCSH) [dcterms:LCSH]	32
6.5.9	Library of Congress Classification (LCC) [dcterms:LCC]	33
6.5.10	Medical Subject Headings (MESH) [dcterms:MESH]	33
6.5.11	Dewey Decimal Classification (DDC) [dcterms:DDC]	33
6.5.12	Universal Decimal Classification (UDC) [dcterms:UDC]	34
6.5.13	Recordkeeping Metadata Schema Extension to ISO8601 [cld:RKMS-ISO8601]	34
6.5.14	Collection [dcmitype:Collection]	34
6.5.15	Subject Completeness Indicator [cld:SCI]	35
6.5.16	Conspectus Level [cld:ConspectusLevel]	35
6.6	Collection Type Vocabulary (cld:CollType)	36
6.6.1	Collection of Collections [colltype:CollectionCollection]	36
6.6.2	Collection of Datasets [colltype:CollectionDataset]	36
6.6.3	Collection of Events [colltype:CollectionEvent]	37
6.6.4	Collection of Images [colltype:CollectionImage]	37
6.6.5	Collection of Moving Images [colltype:CollectionMovingImage]	37
6.6.6	Collection of Still Images [colltype:CollectionStillImage]	38
6.6.7	Collection of Interactive Resources [colltype:CollectionInteractiveResource]	38
6.6.8	Collection of Physical Objects [colltype:CollectionPhysicalObject]	39
6.6.9	Collection of Services [colltype:CollectionService]	39
6.6.10	Collection of Software [colltype:CollectionSoftware]	39
6.6.11	Collection of Sounds [colltype:CollectionSound]	40
6.6.12	Collection of Texts [colltype:CollectionText]	40
6.7	Collection Description Type Vocabulary (cld:CollDescType)	41
6.7.1	Catalogue [colldesctype:Catalogue]	41
6.7.2	Hierarchic Finding Aid [colldesctype:HierarchicFindingAid]	41
6.7.3	Index [colldesctype:Index]	42
7	XML Binding: The nismcd XML format	42
7.1	Description Sets	42
7.2	Descriptions	42
7.3	Statements	43
7.4	Properties and Property URIs	43
7.5	Values and Value Representations	43
Appendix A (informative) W3C XML Schemas for the nismcd XML format		44
Bibliography		45
Figures		
Figure 1: Collection and Related Entities		2
Figure 2: Collection/Service Model Example		3

Foreword

(This foreword is not part of the Collection Description Specification, NISO Z39.91-200X. It is included for information only.)

Acknowledgements

Committee BB wishes to acknowledge all those people who contributed to the development of this draft standard and of the specifications on which it was based, including the Dublin Core Metadata Element Set, the Research Support Libraries Programme (RSLP) Collection Description Model and Schema, and the Dublin Core Collection Description Application Profile.

In particular, Committee BB gratefully acknowledges the work of members of the Dublin Core Metadata Initiative Collection Description Working Group on the latter specification, on which the current standard is closely based.

About This Standard

This standard has been developed as part of the activity of the NISO Metasearch Initiative during 2004-2005. This work builds on several recent initiatives which have developed metadata specifications for collection-level description.

The UK Research Support Libraries Programme (RSLP) operated from 1999 to 2002. Two of its key aims were to support academic researchers by improving the disclosure and discovery of research collections—primarily library and archive collections—and by enhancing the collaborative management of those collections. The programme recognized the value of collection-level description in achieving these goals and during 1999-2000 it funded research to develop:

- An Entity-Relation Model for collections and related resources: *An Analytical Model of Collections and their Catalogues*, developed by Michael Heaney (University of Oxford).
- A Dublin Core-based metadata schema based on that data model: the *RSLP Collection Description Schema*, developed by Andy Powell (UKOLN).

The RSLP CD Schema supports the representation of a subset of the entities in the full data model. Within that subset, it also simplifies some aspects of the model: in the model, relationships may carry attributes; in the metadata schema, relationships are represented as simple properties and do not themselves carry attributes. So, even for that subset of entities, the metadata schema is not capable of expressing all the information that is represented by the model.

Several projects within the RSLP programme implemented collection-level description services based on either the model or the RSLP CD Schema. The model and/or the schema were also used as the basis for approaches to collection-level description within a number of initiatives, including The European Library (TEL), the Institute of Museum and Library Services (IMLS) Collections Register, and the Joint Information Systems Committee Information Environment Service Registry (JISC IESR).

Following on from this work, an activity was launched within the Dublin Core Metadata Initiative (DCMI) to build on the experience of implementers of the RSLP CD Schema and similar schemas to identify a “core” set of terms to be used in a Dublin Core-based collection-level description and to formalize that specification as a Dublin Core “Application Profile”. This work has taken place within the DCMI Collection Description Working Group since 2002. The WG has issued a number of drafts of the Dublin Core Collection Description Application Profile (DC CD AP), and it is still currently under development.

In April 2004, Standards Committee BB within the NISO Metasearch Initiative decided to use the DC CD AP as the basis for their collection description metadata schema. The Metasearch Collection Description Schema described in this document is also a Dublin Core Application Profile. It extends the DC CD AP in one functional area, but otherwise is based directly on that profile. This document also specifies an XML binding for the Metasearch Collection Description Schema.

NISO Z39.91-200x

The Metasearch Collection Description Schema is designed to be used in conjunction with the Information Retrieval Service Description Specification (NISO Z39.92 – 200X).

Note for this draft standard: This draft is considered version 0.9 of the standard. Since the definitions clause is missing, the text is not yet complete. The missing clause will be included into the second draft (to be published in spring 2006, half-way through the 12-month trial); this second draft will be considered version 1.0 of the standard. The second draft will also incorporate the feedback from implementers and other users up to that point.

Trademarks, Service Marks

Wherever used in this standard, all terms that are trademarks or service marks are and remain the property of their respective owners.

NISO Voting Members

At the time this standard was approved, NISO had the following voting members.

[to be added when standard goes to ballot]

NISO Board of Directors

At the time NISO issued this DSFTU, the following individuals served on its Board of Directors:

Carl Grant, Chair
VTLS, Inc.

Robin Murray, Vice Chair and Chair-Elect
Fretwell-Downing Informatics

Jan Peterson, Immediate Past Chair
Infotrieve

Pat Stevens, Chair of SDC
Consultant

Douglas Cheney, Treasurer
Barnes & Noble, Inc.

Patricia R Harris, Executive
Director/Secretary
NISO

Directors:

Nancy Davenport
Council on Library and Information
Resources

Lorcan Dempsey
OCLC, Inc.

Daniel Greenstein
California Digital Library

James Neal
Columbia University

Oliver Pesch
EBSCO Information Services

Bruce Rosenblum
INERA, Inc.

Eric Swanson
John Wiley & Sons, Inc.

Committee BB Members

Grace Agnew
Rutgers University Libraries

Patricia Brennan
Thomson Scientific

Robina Clayphan
The British Library

Emily Fayen
MuseGlobal Inc.

Sebastian Hammer
IndexData

Anne Karle-Zenith
Michigan State University

Julie Blume Nye
Fretwell-Downing Inc.

Robert Sanderson
University of Liverpool

Sarah Shreeves
University of Illinois, Urbana-Champaign

Chuck Thomas
Florida State University

Terry Wilan
Talis Information Ltd.

Kristina Aston
National Archives of Canada

Mary Bushing
Library Consultant and Educator

Larry Dixon
Library of Congress

Juha Hakala (Chair)
Helsinki University Library

Pete Johnston
UKOLN, University of Bath

Vicki Miller
OCLC Inc.

Judith Pearce
National Library of Australia

Juliane Schneider
NYU School of Medicine

Patricia Stevens
NISO

Theo van Veen
National Library of the Netherlands

Maja Zumer
National Library of Slovenia

Collection Description Specification

1 Purpose

The purpose of this standard is to provide a means of creating descriptions of collections, aggregations of items, in such a way that those descriptions can be deployed within applications to support various operations on those collections. This metadata can be used by humans to discover and select collections and also by software agents such as metasearch engines performing such tasks on behalf of human users.

In particular the standard seeks to support:

- the **discovery** of collections of potential interest using some common access points,
- the **identification** of a known collection,
- the **selection** of one or more collections from amongst a number of discovered collections, and
- the **identification** of the services that provide access to the collection.

2 Scope

The standard is applicable to a wide range of collections, though the primary concern in the metasearch context is with aggregations of digital items. Those items may be of any type, and aggregations may be formed by many different criteria. Collections may contain any number of items and may have varying degrees of permanence. The decision as to what constitutes a collection is typically made on pragmatic grounds, on the basis of what is considered useful for resource discovery or resource management.

The standard specifies a set of metadata terms that may be used to create Dublin Core descriptions of collections. The set of metadata terms is based on the Dublin Core metadata vocabularies, and specifically on the set of terms specified by the Dublin Core Collection Description Application Profile.

The standard also specifies an XML format for the serialization of such descriptions for exchange between applications. This standard does not provide cataloguing rules or user guidelines for collection description metadata. Neither does it provide implementation guidelines for vendors.

Having discovered collections of interest and identified the services that provide access to a selected collection, the agent then requires sufficient information to interact with that service: that information is provided by the standard, NISO Z39.92 – 200X: *Information Retrieval Service Description Specification*.

3 References

This standard references the following documents:

NISO Z39.92–200X, *Information Retrieval Service Description Specification* [Draft Standard for Trial Use]

ANSI/NISO Z39.85–2001, *Dublin Core Metadata Element Set*

Michael Heaney. *An Analytical Model of Collections and their Catalogues*
<http://www.ukoln.ac.uk/metadata/rsip/model/>

4 Definitions

The following terms, as used in this standard, have the meanings indicated.

Term	Definition
[to be added at a later date]	

5 Abstract Model for Collections

The data model that provides the basis for the Metasearch Collection Description Schema (and the Dublin Core Collection Description Application Profile) is adapted from the entity-relation model described by Michael Heaney in his study, *An Analytical Model of Collections and their Catalogues*. The derivation discussed takes into consideration work done by the JISC Information Environment Service Registry project in the United Kingdom and is known to be compatible with it.

Heaney notes that his model is primarily concerned with the “static” aspects of collections and the related entities he identifies, rather than with the more dynamic or transactional aspects that arise when interaction with the collection is considered. As a consequence, his model does not explicitly refer to services; it takes the view of a Location as a place, either physical or electronic, in which the collection is located, and to which access is controlled by an Administrator.

Four entities have been derived from Heaney’s model: Agent, Collection, Item, and Service.

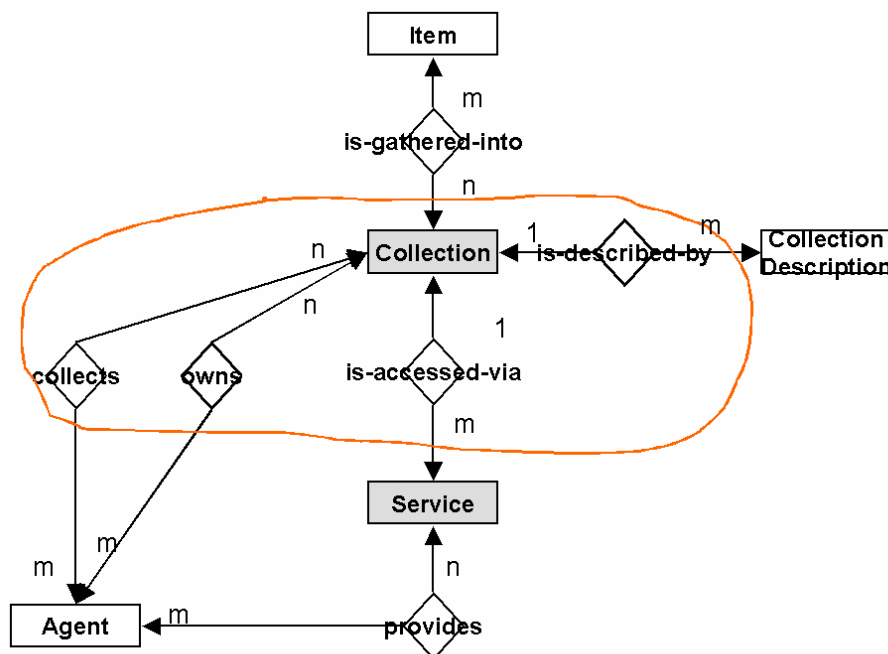


Figure 1: Collection and Related Entities

An Agent is either a personal or organizational entity capable of action. Heaney divides this into four entities with different roles: Administrator, Collector, Owner, and Producer; however the attributes of each remain the same and we can treat them as a single type of entity with different relations. An Agent may have a variety of relations, including administering Services or owning Collections, creating Items, collecting Items, describing Services, Collections or Items, and so forth. It is not within the scope of the standard to define all such relations, nor provide a means of describing the relevant attributes of agents.

An Item in Heaney’s model is an instantiation of Content, which he defines as an intellectual creation. This is consistent with the IFLA recommendation, *Functional Requirements for Bibliographic Records*. However, in terms of the current model, we are primarily concerned with what can be retrieved via the Service, so the two entities have been reduced to one which encompasses both aspects. Items are, therefore, retrieved from their parent Collection via a Service.

A Collection is a logical grouping of one or more Items. Collections themselves may also be logically or physically grouped together or subdivided, i.e. a Collection may be part of one or more other (super-) Collections and/or may be made up of one or more sub-Collections. A Collection is made available by zero or more Services.

A Service is treated as a subtype of the Location type from the Heaney model—an electronic Location at or through which the Collection is available. A Service makes available exactly one Collection.

For example (see figure 2), a collection may consist of two sub-collections, and be made available by two different services. One of the sub-collections, consisting of one or more items not shown, is made available by a third service. The other sub collection consists of two further sub-sub-collections, one of which is also made available by a service.

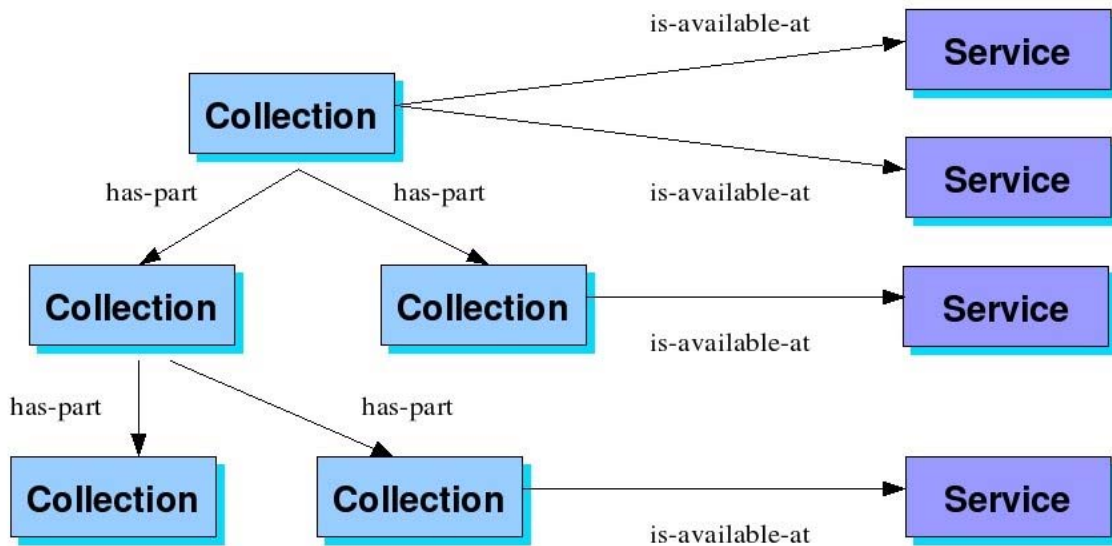


Figure 2: Collection/Service Model Example

This standard is concerned with supporting the description of

- Attributes of the Collection
- Relationships between the Collection and other entities
- Relationships between Collections

This standard does not concern itself with attributes of entities other than the Collection. (However, since the “subject completeness” attribute of the Collection is a ternary relation between the collection, a subject, and a completeness level, representation within the Dublin Core framework, which is based on binary relations, leads to the “subject completeness indicator” effectively being treated as a distinct entity.)

6 Metasearch Collection Description Schema

The *Metasearch Collection Description Schema* is a Dublin Core Application Profile (DCAP). A DC Application Profile describes how the Dublin Core metadata standard is deployed within a metadata application or within a set of applications and services operating within some domain or community. A DCAP is constructed within the conceptual framework for DC metadata defined by the DCMI Abstract Model [DCAM]. Central to the DCAM is the concept that DC metadata is made up of simple *statements* about *resources*. Each of those simple statements references a *property* to assert the existence of a specific type of relationship between the subject resource and a second resource, referred to as a *value*. Statements about a single resource are made in groups known as *descriptions*; descriptions are typically used in functionally-related *description sets*; and those description sets are serialized as *records*.

So a DCAP specifies the set of terms used in the statements within a class of DC metadata description sets: it describes the *properties* that are used in those statements and how the use of those properties is constrained or adapted for the purposes of that application or domain.

In the case of the *Metasearch Collection Description Schema*, the primary subject resource is the collection. While it permits the inclusion of descriptions of other related resources, the Metasearch Collection Description Schema does not specify the properties and classes that may be referenced in descriptions of resources other than collections—with the exception of what are referred to as “Subject Completeness Indicators.” A Subject Completeness Indicator is essentially a pair of attributes made up of a subject term and a level of completeness of the collection in that subject: within the framework of the DCMI Abstract Model it is treated as a distinct resource. So, this section of the draft standard describes:

- First, the **set of terms** used in a particular class of DC metadata *description sets*. Specifically, it describes the set of terms used in description sets comprising:
 - a description of a collection (i.e. a “collection-level description”, or “unitary finding aid” in the terminology of the *Analytical Model of Collections and their Catalogues* [AMCC]), and
 - a description of a “Subject Completeness Indicator” for a collection.
- Secondly, **how** the terms in this set are deployed in this class of DC metadata descriptions.

This includes requirements for the occurrence of *statements* using a specified *property*, constraints on the types of *value* which are referenced in a statement using a specified property (*vocabulary encoding schemes*), and constraints on the *datatypes* of the *value strings* occurring in a statement using a specified property (*syntax encoding schemes*).

The terms description set, description, property, value, vocabulary encoding scheme, value representation, rich representation, value string, syntax encoding scheme, and related description are used in the sense they are used in the DCMI Abstract Model [DCAM].

The metadata terms referenced in the *Metasearch Collection Description Schema* are drawn from the Dublin Core metadata vocabularies and also from other metadata vocabularies.

The *Metasearch Collection Description Schema* is **not** a description of an XML format. There may be multiple bindings of the *Metasearch Collection Description Schema* to XML and to other syntaxes. A suggested XML binding is specified in Section 7.

6.1 Vocabularies/Namespaces used in this DCAP

All references to properties and classes in DC metadata descriptions are made using URIs. In this document, Qualified Names of the form `prefix ":" local-part` are sometimes used as abbreviations for URIs which identify metadata terms. Prefixes are assumed to be associated with Namespace Names (URIs) as follows, and the corresponding URI for the term is constructed by concatenating the Namespace Name and the `local-part`:

Vocabulary Title	Namespace Name	Prefix
The Dublin Core Metadata Element Set, v1.1	http://purl.org/dc/elements/1.1/	dc
Dublin Core Terms	http://purl.org/dc/terms/	dcterms
Dublin Core Type Vocabulary	http://purl.org/dc/dcmitype/	dcmitype
MARC Relator Code Properties	http://www.loc.gov/loc.terms/relators/	marcrel
Collection-Level Description Terms	http://purl.org/cld/terms/	cld
Collection Type Vocabulary Terms	http://purl.org/cld/collection/type/	colltype
Collection Description Type Vocabulary Terms	http://purl.org/cld/colldesc/type/	colldescatype

6.2 Property Usage

Each table in the following sections describes how a specified property should be used in a statement within a DC metadata description. This set of attributes is based on the conventions for documenting Dublin Core Application Profiles described in the CEN Workshop Agreement CWA14855 – Dublin Core Application Profile guidelines.

- **Identifier:** The URI by which the property is referenced in a DC metadata description.
- **Qualified Name:** The Qualified Name which is typically used as an abbreviation for the URI.
- **Defined By:** The name and identifier of the metadata vocabulary from which the property is drawn.
- **Type of Term:** An indication of the type of the term, according to the typology of the DCMI Abstract Model.
- **Source Label:** The short label provided for the property by its owner/maintenance agency.
- **Label in this DCAP:** A short label that provides an indication of how the property is to be used in a DC CD AP collection description. The label does not appear in the description. It *may* be used to provide a descriptor for fields in displays of DC CD AP collection descriptions, but there is no requirement for display applications to use this label.
- **Source Definition:** The definition provided for the property by its owner/maintenance agency.

- **Usage in this DCAP:** A description of how the definition of the property is to be applied in DC CD AP collection descriptions. This information supplements the definition of the property provided by its owner/maintenance agency.
- **Comments:** Additional information about the use of the property in the DC CD AP, typically on the values and their representation.
- **Refines:** Properties of which the current property is a subproperty.
- **Refined By:** Properties which are subproperties of the current property.
- **Uses Vocabulary Encoding Scheme:** The unique names/identifiers of classes from which values for the property should be drawn. Names are presented as Qualified Names, but are abbreviations for URIs. The URI *must* be used to refer to the class in DC CD AP collection descriptions. If no class is listed, then the DC CD AP does not specify the class from which values should be drawn. However the definition and usage of the property may determine that values of only certain types are appropriate. For example, the value of the `dc:creator` property must be an entity capable of action.
- **Value URI:** An indication of whether a value URI is to be used in a statement using the property (and vocabulary encoding scheme, where specified). M = a value URI is required, O = a value URI is optional (see note), N = a value URI is not permitted.
- **Value String:** An indication of whether a value string is to be used in a statement using the property (and vocabulary encoding scheme, where specified). M = a value string is required, O = a value string is optional (see note), N = a value string is not permitted.
- **Syntax Encoding Scheme(s):** The unique names/identifiers of datatypes from which value strings for the property should be drawn. Names are presented as Qualified Names, but are abbreviations for URIs. The URI *must* be used to refer to the datatype in DC CD AP collection descriptions. If no datatype is listed, then the DC CD AP does not specify the class from which values should be drawn.
- **Rich Representation:** An indication of whether a rich representation is to be used in a statement using the property (and vocabulary encoding scheme, where specified). M = a rich representation is required, O = a rich representation is optional (see note), N = a rich representation is not permitted.
- **Related Description:** An indication of whether a (related) description of the value is to be provided. M = a description is required, O = a description is optional (see note), N = a description is not permitted.
- **Obligation:** An indication of whether a statement using this property is required in a DC CD AP collection description. M = a statement using this property is required, OR = a statement using this property is optional but recommended, O = a statement using this property is optional.
- **Condition:** Information on any additional conditions on the obligation to use the property.
- **Occurrences:** The minimum and maximum number of statements referencing this property that can occur in a metadata description.

NOTE: For each value, **at least one** of the following components must be present: a value URI, a rich representation, a value string, or a (related) description.

6.3 Collection Properties

This section lists the properties used in the description of a collection, and describes constraints on the occurrence of statements referencing the properties, and on the types of their values.

6.3.1 Collection Identifier [`dc:identifier`]

Term Identifier	<code>http://purl.org/dc/elements/1.1/identifier</code>
Qualified Name	<code>dc:identifier</code>

Defined By	The Dublin Core Metadata Element Set, v1.1 http://purl.org/dc/elements/1.1/				
Type of Term	Property (Element)				
Source Label	Resource Identifier				
Label in this DCAP	Collection Identifier				
Source Definition	An unambiguous reference to the resource within a given context.				
Usage in this DCAP	A globally unique formal identifier for the collection.				
Comments for this DCAP	A collection identifier must be a URI, and the use of a URI scheme that has been registered with IANA is preferred.				
Refines	[n/a]				
Refined by	[n/a]				
Uses Vocabulary Encoding Scheme	dcterms:URI, Dublin Core Terms http://purl.org/dc/terms/URI				
	Value URI	Value String	Syntax Encoding Scheme(s)	Rich Represent	Related Descrip
	N	M		N	O
Obligation	Optional, but recommended				
Condition	[n/a]				
Occurrence	Minimum: 0, Maximum: unbounded				

6.3.2 Title [dc:title]

Term Identifier	http://purl.org/dc/elements/1.1/title
Qualified Name	dc:title
Defined By	The Dublin Core Metadata Element Set, v1.1 http://purl.org/dc/elements/1.1/
Type of Term	Property (Element)
Source Label	Title
Label in this DCAP	Title
Source Definition	A name given to the resource.
Usage in this DCAP	The name of the collection.

Comments for this DCAP	Where an existing name is used, the value string should preserve the original wording, order, and spelling of an existing name. Punctuation need not reflect the usage of the original. Subtitles should be separated from the title by a colon, for example: Voices from the Dust Bowl: The Charles L. Todd and Robert Sonkin Migrant Worker Collection										
Refines	[n/a]										
Refined by	dcterms:alternative, Dublin Core Terms http://purl.org/dc/terms/alternative										
Uses Vocabulary Encoding Scheme	[Value type not specified] <table border="1"> <thead> <tr> <th>Value URI</th> <th>Value String</th> <th>Syntax Encoding Scheme(s)</th> <th>Rich Represent</th> <th>Related Descrip</th> </tr> </thead> <tbody> <tr> <td>N</td> <td>M</td> <td></td> <td>N</td> <td>O</td> </tr> </tbody> </table>	Value URI	Value String	Syntax Encoding Scheme(s)	Rich Represent	Related Descrip	N	M		N	O
Value URI	Value String	Syntax Encoding Scheme(s)	Rich Represent	Related Descrip							
N	M		N	O							
Obligation	Mandatory										
Condition	[n/a]										
Occurrence	Minimum: 1, Maximum: unbounded										

6.3.3 Alternative Title [dcterms:alternative]

Term Identifier	http://purl.org/dc/terms/alternative
Qualified Name	dcterms:alternative
Defined By	Dublin Core Terms http://purl.org/dc/terms/
Type of Term	Property (Element Refinement)
Source Label	Alternative
Label in this DCAP	Alternative Title
Source Definition	Any form of the title used as a substitute or alternative to the formal title of the resource.
Usage in this DCAP	Any form of the name used as a substitute or alternative to the formal name of the collection.
Comments for this DCAP	Values may include acronyms that are used in addition to the name of the collection.
Refines	dc:title, Dublin Core Metadata Element Set, v1.1 http://purl.org/dc/elements/1.1/title
Refined by	[n/a]

Uses Vocabulary Encoding Scheme	[Value type not specified]				
	Value URI	Value String	Syntax Encoding Scheme(s)	Rich Represent	Related Descrip
	N	M		N	O
Obligation	Optional				
Condition	[n/a]				
Occurrence	Minimum: 0, Maximum: unbounded				

6.3.4 Description [dcterms:abstract]

Term Identifier	http://purl.org/dc/terms/abstract				
Qualified Name	dcterms:abstract				
Defined By	Dublin Core Terms http://purl.org/dc/terms/				
Type of Term	Property (Element refinement)				
Source Label	Abstract				
Label in this DCAP	Description				
Source Definition	A summary of the content of the resource.				
Usage in this DCAP	A summary of the content of the collection.				
Comments for this DCAP	A free text summary of the collection. Although a description might contain detailed subject-specific information, at least part of the description should be understandable by an end-user with no specialist knowledge of the subject area.				
Refines	dc:description, Dublin Core Metadata Element Set, v1.1 http://purl.org/dc/elements/1.1/description				
Uses Vocabulary Encoding Scheme	[Value type not specified]				
	Value URI	Value String	Syntax Encoding Scheme(s)	Rich Represent	Related Descrip
	N	M		N	O
Obligation	Mandatory				
Condition	[n/a]				
Occurrence	Minimum: 1, Maximum: unbounded				

6.3.5 Size [dcterms:extent]

Term Identifier	http://purl.org/dc/terms/extent				
Qualified Name	dcterms:extent				
Defined By	Dublin Core Terms http://purl.org/dc/terms/				
Type of Term	Property (Element Refinement)				
Source Label	Extent				
Label in this DCAP	Size				
Source Definition	The size or duration of the resource.				
Usage in this DCAP	The size of the collection.				
Comments for this DCAP	[n/a]				
Refines	dc:format, Dublin Core Metadata Element Set, v1.1 http://purl.org/dc/elements/1.1/format				
Refined by	[n/a]				
Uses Vocabulary Encoding Scheme	[Value type not specified]				
	Value URI	Value String	Syntax Encoding Scheme(s)	Rich Represent	Related Descrip
	N	M		N	O
Obligation	Optional				
Condition	[n/a]				
Occurrence	Minimum: 0, Maximum: unbounded				

6.3.6 Language [dc:language]

Term Identifier	http://purl.org/dc/elements/1.1/language				
Qualified Name	dc:language				
Defined By	The Dublin Core Metadata Element Set, v1.1 http://purl.org/dc/elements/1.1/				
Type of Term	Property (Element)				
Source Label	Language				
Label in this DCAP	Language				
Source Definition	A language of the intellectual content of the resource.				
Usage in this DCAP	A language of the content of the items in the collection.				

Comments for this DCAP	The value string should be a language name in the form of the three character code defined by ISO 639-2. Where the collection covers multiple languages, a separate statement should be used for each language.				
Refines	[n/a]				
Refined by	[n/a]				
Uses Vocabulary Encoding Scheme	dcterms:ISO639-2, Dublin Core Terms http://purl.org/dc/terms/ISO639-2				
	Value URI	Value String	Syntax Encoding Scheme(s)	Rich Represent	Related Descrip
	O	M		N	O
Obligation	Optional				
Condition	[n/a]				
Occurrence	Minimum: 0, Maximum: unbounded				

6.3.7 Type [dc:type]

Term Identifier	http://purl.org/dc/elements/1.1/type				
Qualified Name	dc:type				
Defined By	The Dublin Core Metadata Element Set, v1.1 http://purl.org/dc/elements/1.1/				
Type of Term	Property (Element)				
Source Label	Resource Type				
Label in this DCAP	Collection Type				
Source Definition	The nature or genre of the content of the resource.				
Usage in this DCAP	A type of the collection.				
Comments for this DCAP	Where the collection is categorized to be of an instance of multiple types, a separate statement should be used for each type.				
Refines	[n/a]				
Refined by	[n/a]				
Uses Vocabulary Encoding Scheme	cld:CollType, Collection-Level Description Terms http://purl.org/cld/terms/CollType				
	Value URI	Value String	Syntax Encoding Scheme(s)	Rich Represent	Related Descrip
	O	M		N	O

Uses Vocabulary Encoding Scheme	cld:CollDescType, Collection-Level Description Terms http://purl.org/cld/terms/CollDescType				
	Value URI	Value String	Syntax Encoding Scheme(s)	Rich Represent	Related Descrip
	O	M		N	O
Obligation	Optional				
Condition	[n/a]				
Occurrence	Minimum: 0, Maximum: unbounded				

6.3.8 Rights [dc:rights]

Term Identifier	http://purl.org/dc/elements/1.1/rights				
Qualified Name	dc:rights				
Defined By	The Dublin Core Metadata Element Set, v1.1 http://purl.org/dc/elements/1.1/				
Type of Term	Property (Element)				
Source Label	Rights				
Label in this DCAP	Rights				
Source Definition	Information about rights held in and over the resource.				
Usage in this DCAP	A statement of any rights held in/over the collection.				
Comments for this DCAP	[n/a]				
Refines	[n/a]				
Refined by	dcterms:accessRights, Dublin Core Terms http://purl.org/dc/terms/accessRights				
Uses Vocabulary Encoding Scheme	[Value type not specified]				
	Value URI	Value String	Syntax Encoding Scheme(s)	Rich Represent	Related Descrip
	O	O		N	O
Obligation	Optional				
Condition	[n/a]				
Occurrence	Minimum: 0, Maximum: unbounded				

6.3.9 Access Rights [dcterms:accessRights]

Term Identifier	http://purl.org/dc/terms/accessRights				
Qualified Name	dcterms:accessRights				

Defined By	Dublin Core Terms http://purl.org/dc/terms/				
Type of Term	Property (Element Refinement)				
Source Label	Access Rights				
Label in this DCAP	Access Rights				
Source Definition	Information about who can access the resource or an indication of its security status.				
Usage in this DCAP	A statement of any access restrictions placed on the collection, including allowed users, charges, etc.				
Comments for this DCAP	[n/a]				
Refines	dc:rights, Dublin Core Metadata Element Set, v1.1 http://purl.org/dc/elements/1.1/rights				
Refined by	[n/a]				
Uses Vocabulary Encoding Scheme	[Value type not specified]				
	Value URI	Value String	Syntax Encoding Scheme(s)	Rich Represent	Related Descrip
	O	O		N	O
Obligation	Optional				
Condition	[n/a]				
Occurrence	Minimum: 0, Maximum: unbounded				

6.3.10 Accrual Method [dcterms:accrualMethod]

Term Identifier	http://purl.org/dc/terms/accrualMethod
Qualified Name	dcterms:accrualMethod
Defined By	Dublin Core Terms http://purl.org/dc/terms/
Type of Term	Property (Element)
Source Label	Accrual Method
Label in this DCAP	Accrual Method
Source Definition	The method by which items are added to a collection.
Comments for this DCAP	Recommended best practice is to use a value from the DCCD Accrual Method encoding scheme. Where multiple methods apply, a separate statement should be used for each method.
Refines	[n/a]

Refined by	[n/a]				
Uses Vocabulary Encoding Scheme	cld:DCCDAccrualMethod, Collection-Level Description Terms http://purl.org/cld/terms/DCCDAccrualMethod				
	Value URI	Value String	Syntax Encoding Scheme(s)	Rich Represent	Related Descrip
	O	M		N	O
Obligation	Optional				
Condition	[n/a]				
Occurrence	Minimum: 0, Maximum: unbounded				

6.3.11 Accrual Periodicity [dcterms:accrualPeriodicity]

Term Identifier	http://purl.org/dc/terms/accrualPeriodicity				
Qualified Name	dcterms:accrualPeriodicity				
Defined By	Dublin Core Terms http://purl.org/dc/terms/				
Type of Term	Property (Element)				
Source Label	Accrual Periodicity				
Label in this DCAP	Accrual Periodicity				
Source Definition	The frequency with which items are added to a collection.				
Comments for this DCAP	Recommended best practice is to use a value from the DCCD Accrual Periodicity encoding scheme.				
Refines	[n/a]				
Refined by	[n/a]				
Uses Vocabulary Encoding Scheme	cld:DCCDAccrualPeriodicity, Collection-Level Description Terms http://purl.org/cld/terms/DCCDAccrualPeriodicity				
	Value URI	Value String	Syntax Encoding Scheme(s)	Rich Represent	Related Descrip
	O	M		N	O
Obligation	Optional				
Condition	[n/a]				
Occurrence	Minimum: 0, Maximum: unbounded				

6.3.12 Accrual Policy [dcterms:accrualPolicy]

Term Identifier	http://purl.org/dc/terms/accrualPolicy				
Qualified Name	dcterms:accrualPolicy				

Defined By	Dublin Core Terms http://purl.org/dc/terms/				
Type of Term	Property (Element)				
Source Label	Accrual Policy				
Label in this DCAP	Accrual Policy				
Source Definition	The policy governing the addition of items to a collection.				
Comments for this DCAP	Recommended best practice is to use a value from the DCCD Accrual Policy encoding scheme. Where multiple policies apply, a separate statement should be used for each policy.				
Refines	[n/a]				
Refined by	[n/a]				
Uses Vocabulary Encoding Scheme	cld:DCCDAccrualPolicy, Collection-Level Description Terms http://purl.org/cld/terms/DCCDAccrualPolicy				
	Value URI	Value String	Syntax Encoding Scheme(s)	Rich Represent	Related Descrip
	O	M		N	O
Obligation	Optional				
Condition	[n/a]				
Occurrence	Minimum: 0, Maximum: unbounded				

6.3.13 Custodial History [dcterms:provenance]

Term Identifier	http://purl.org/dc/terms/provenance
Qualified Name	dcterms:provenance
Defined By	Dublin Core Terms http://purl.org/dc/terms/
Type of Term	Property (Element)
Source Label	Provenance
Label in this DCAP	Custodial History
Source Definition	A statement of any changes in ownership and custody of the resource since its creation that are significant for its authenticity, integrity, and interpretation.
Usage in this DCAP	A statement of any changes in ownership and custody of the collection that are significant for its authenticity, integrity, and interpretation.
Comments for this DCAP	[n/a]
Refines	[n/a]

Refined by	[n/a]										
Uses Vocabulary Encoding Scheme	[Value type not specified]										
	<table border="1"> <thead> <tr> <th>Value URI</th> <th>Value String</th> <th>Syntax Encoding Scheme(s)</th> <th>Rich Represent</th> <th>Related Descrip</th> </tr> </thead> <tbody> <tr> <td>O</td> <td>M</td> <td></td> <td>N</td> <td>O</td> </tr> </tbody> </table>	Value URI	Value String	Syntax Encoding Scheme(s)	Rich Represent	Related Descrip	O	M		N	O
Value URI	Value String	Syntax Encoding Scheme(s)	Rich Represent	Related Descrip							
O	M		N	O							
Obligation	Optional										
Condition	[n/a]										
Occurrence	Minimum: 0, Maximum: unbounded										

6.3.14 Audience [dcterms:audience]

Term Identifier	http://purl.org/dc/terms/audience										
Qualified Name	dcterms:audience										
Defined By	Dublin Core Terms http://purl.org/dc/terms/										
Type of Term	Property (Element)										
Source Label	Audience										
Label in this DCAP	Audience										
Source Definition	A class of entity for whom the resource is intended or useful.										
Usage in this DCAP	A class of entity for whom the collection is intended or useful.										
Comments for this DCAP	Where a collection is intended or useful for multiple audiences, a separate statement should be used for each audience.										
Refines	[n/a]										
Refined by	[n/a]										
Uses Vocabulary Encoding Scheme	[Value type not specified]										
	<table border="1"> <thead> <tr> <th>Value URI</th> <th>Value String</th> <th>Syntax Encoding Scheme(s)</th> <th>Rich Represent</th> <th>Related Descrip</th> </tr> </thead> <tbody> <tr> <td>O</td> <td>M</td> <td></td> <td>N</td> <td>O</td> </tr> </tbody> </table>	Value URI	Value String	Syntax Encoding Scheme(s)	Rich Represent	Related Descrip	O	M		N	O
Value URI	Value String	Syntax Encoding Scheme(s)	Rich Represent	Related Descrip							
O	M		N	O							
Obligation	Optional										
Condition	[n/a]										
Occurrence	Minimum: 0, Maximum: unbounded										

6.3.15 Subject [dc:subject]

Term Identifier	http://purl.org/dc/elements/1.1/subject				
Qualified Name	dc:subject				
Defined By	The Dublin Core Metadata Element Set, v1.1 http://purl.org/dc/elements/1.1/				
Type of Term	Property (Element)				
Source Label	Subject and Keywords				
Label in this DCAP	Subject				
Source Definition	The topic of the content of the resource.				
Usage in this DCAP	A subject or topic associated with the items in the collection.				
Comments for this DCAP	<p>Keywords or subject descriptors associated with items in the collection.</p> <p>The terms used indicate the subject matter of the collection.</p> <p>Where multiple keywords or subject descriptors are provided, a separate statement should be used for each keyword or term.</p> <p>The vocabulary encoding schemes below are those recommended by DCMI. Other appropriate vocabulary encoding schemes may be used, and the use of a scheme must be indicated.</p>				
Refines	[n/a]				
Refined by	[n/a]				
Uses Vocabulary Encoding Scheme	dcterms:LCSH, Dublin Core Terms http://purl.org/dc/terms/LCSH				
	Value URI	Value String	Syntax Encoding Scheme(s)	Rich Represent	Related Descrip
	O	M		N	O
Uses Vocabulary Encoding Scheme	dcterms:LCC, Dublin Core Terms http://purl.org/dc/terms/LCC				
	Value URI	Value String	Syntax Encoding Scheme(s)	Rich Represent	Related Descrip
	O	M		N	O
Uses Vocabulary Encoding Scheme	dcterms:MESH, Dublin Core Terms http://purl.org/dc/terms/MESH				
	Value URI	Value String	Syntax Encoding Scheme(s)	Rich Represent	Related Descrip
	O	M		N	O

Uses Vocabulary Encoding Scheme	dcterms:DDC, Dublin Core Terms http://purl.org/dc/terms/DDC				
	Value URI	Value String	Syntax Encoding Scheme(s)	Rich Represent	Related Descrip
	O	M		N	O
Uses Vocabulary Encoding Scheme	dcterms:UDC, Dublin Core Terms http://purl.org/dc/terms/UDC				
	Value URI	Value String	Syntax Encoding Scheme(s)	Rich Represent	Related Descrip
	O	M		N	O
Obligation	Optional				
Condition	[n/a]				
Occurrence	Minimum: 0, Maximum: unbounded				

6.3.16 Spatial Coverage [dcterms:spatial]

Term Identifier	http://purl.org/dc/terms/spatial				
Qualified Name	dcterms:spatial				
Defined By	Dublin Core Terms http://purl.org/dc/terms/				
Type of Term	Property (Element Refinement)				
Source Label	Spatial				
Label in this DCAP	Spatial Coverage				
Source Definition	Spatial characteristics of the intellectual content of the resource.				
Usage in this DCAP	The spatial coverage of the content of the items in the collection.				
Comments for this DCAP	[n/a]				
Refines	dc:coverage, Dublin Core Metadata Element Set, v1.1 http://purl.org/dc/elements/1.1/coverage				
Refined by	[n/a]				
Uses Vocabulary Encoding Scheme	[Value type not specified]				
	Value URI	Value String	Syntax Encoding Scheme(s)	Rich Represent	Related Descrip
	O	M		N	O
Obligation	Optional				

Condition	[n/a]
Occurrence	Minimum: 0, Maximum: unbounded

6.3.17 Temporal Coverage [dcterms:temporal]

Term Identifier	http://purl.org/dc/terms/temporal				
Qualified Name	dcterms:temporal				
Defined By	Dublin Core Terms http://purl.org/dc/terms/				
Type of Term	Property (Element Refinement)				
Source Label	Temporal				
Label in this DCAP	Temporal Coverage				
Source Definition	Temporal characteristics of the intellectual content of the resource.				
Usage in this DCAP	The temporal coverage of the content of the items in the collection.				
Comments for this DCAP	[n/a]				
Refines	dc:coverage, Dublin Core Metadata Element Set, v1.1 http://purl.org/dc/elements/1.1/coverage				
Refined by	[n/a]				
Uses Vocabulary Encoding Scheme	[Value type not specified]				
	Value URI	Value String	Syntax Encoding Scheme(s)	Rich Represent	Related Descrip
	O	M		N	O
Obligation	Optional				
Condition	[n/a]				
Occurrence	Minimum: 0, Maximum: unbounded				

6.3.18 Accumulation Date Range [dcterms:created]

Term Identifier	http://purl.org/dc/terms/created				
Qualified Name	dcterms:created				
Defined By	Dublin Core Terms http://purl.org/dc/terms/				
Type of Term	Property (Element Refinement)				
Source Label	Created				
Label in this DCAP	Accumulation Date Range				

Source Definition	Date of creation of the resource.										
Usage in this DCAP	The range of dates over which the collection was accumulated.										
Comments for this DCAP	<p>A date range should be supplied in the form described by RKMS-ISO8601. Start dates and end dates should be in the form of a date or date-time combination as specified by W3CDTF. Start dates and end dates should be separated by a solidus (forward slash) (/). Either the start date or the end date may be omitted to indicate an open-ended date range.</p> <p>All the following are examples of RKMS-ISO8601 date ranges:</p> <p>1888/1894 1960/ /1960 2000-02/2000-06-18</p> <p>indicating, '1888 to 1894', '1960 onwards', 'up until 1960' and 'February 2000 to 18 June 2000' respectively.</p> <p>Where multiple ranges are required, a separate statement should be used for each range.</p>										
Refines	dc:date, Dublin Core Metadata Element Set, v1.1 http://purl.org/dc/elements/1.1/date										
Refined by	[n/a]										
Uses Vocabulary Encoding Scheme	<p>cld:RKMS-ISO8601, Collection-Level Description Terms http://purl.org/cld/terms/RKMS-ISO8601</p> <table border="1"> <thead> <tr> <th>Value URI</th> <th>Value String</th> <th>Syntax Encoding Scheme(s)</th> <th>Rich Represent</th> <th>Related Descrip</th> </tr> </thead> <tbody> <tr> <td>O</td> <td>M</td> <td></td> <td>N</td> <td>O</td> </tr> </tbody> </table>	Value URI	Value String	Syntax Encoding Scheme(s)	Rich Represent	Related Descrip	O	M		N	O
Value URI	Value String	Syntax Encoding Scheme(s)	Rich Represent	Related Descrip							
O	M		N	O							
Obligation	Optional										
Condition	[n/a]										
Occurrence	Minimum: 0, Maximum: unbounded										

6.3.19 Contents Date Range [cld:dateContentsCreated]

Term Identifier	http://purl.org/cld/terms/dateContentsCreated
Qualified Name	cld:dateContentsCreated
Defined By	Collection-Level Description Terms http://purl.org/cld/terms/
Type of Term	Property (Element Refinement)
Source Label	Date Contents Created
Label in this DCAP	Contents Date Range
Source Definition	The range of dates over which the individual items within the collection were created.

Usage in this DCAP	[n/a]										
Comments for this DCAP	<p>A date range should be supplied in the form described by RKMS-ISO8601. Start dates and end dates should be in the form of a date or date-time combination as specified by W3CDTF. Start dates and end dates should be separated by a solidus (forward slash) (/). Either the start date or the end date may be omitted to indicate an open-ended date range.</p> <p>All the following are examples of RKMS-ISO8601 date ranges:</p> <p>1888/1894 1960/ /1960 2000-02/2000-06-18</p> <p>indicating, '1888 to 1894', '1960 onwards', 'up until 1960' and 'February 2000 to 18 June 2000' respectively.</p> <p>Where multiple ranges are required, a separate statement should be used for each range.</p>										
Refines	dc:date, Dublin Core Metadata Element Set, v1.1 http://purl.org/dc/elements/1.1/date										
Refined by	[n/a]										
Uses Vocabulary Encoding Scheme	<p>cld:RKMS-ISO8601, Collection-Level Description Terms http://purl.org/cld/terms/RKMS-ISO8601</p> <table border="1"> <thead> <tr> <th>Value URI</th> <th>Value String</th> <th>Syntax Encoding Scheme(s)</th> <th>Rich Represent</th> <th>Related Descrip</th> </tr> </thead> <tbody> <tr> <td>O</td> <td>M</td> <td></td> <td>N</td> <td>O</td> </tr> </tbody> </table>	Value URI	Value String	Syntax Encoding Scheme(s)	Rich Represent	Related Descrip	O	M		N	O
Value URI	Value String	Syntax Encoding Scheme(s)	Rich Represent	Related Descrip							
O	M		N	O							
Obligation	Optional										
Condition	[n/a]										
Occurrence	Minimum: 0, Maximum: unbounded										

6.3.20 Subject Completeness [cld:subjectCompleteness]

Term Identifier	http://purl.org/cld/terms/subjectCompleteness
Qualified Name	cld:subjectCompleteness
Defined By	Collection-Level Description Terms http://purl.org/cld/terms/
Type of Term	Property (Element)
Source Label	Subject Completeness
Label in this DCAP	Subject Completeness
Source Definition	An indicator of the depth of a collection in relation to a subject field. In other words, subject completeness indicates how the number of items in the collection in a specified subject field compares with the total body of available items in that subject field.

Usage in this DCAP	[n/a]										
Comments for this DCAP	<p>Subject completeness is mainly applicable to collections consisting of published resources where it is possible to make some estimate of the total body of published items in any area.</p> <p>The value must be a Subject Completeness Indicator.</p> <p>A subject completeness indicator specifies two things: a subject in which completeness is being indicated a level of completeness in that subject</p> <p>Completeness in multiple subjects may be specified by using a separate statement for each indicator.</p>										
Refined by	[n/a]										
Uses Vocabulary Encoding Scheme	<p>clد:SCI, Collection-Level Description Terms http://purl.org/clد/terms/SCI</p> <table border="1"> <thead> <tr> <th>Value URI</th> <th>Value String</th> <th>Syntax Encoding Scheme(s)</th> <th>Rich Represent</th> <th>Related Descrip</th> </tr> </thead> <tbody> <tr> <td>O</td> <td>O</td> <td></td> <td>N</td> <td>O</td> </tr> </tbody> </table>	Value URI	Value String	Syntax Encoding Scheme(s)	Rich Represent	Related Descrip	O	O		N	O
Value URI	Value String	Syntax Encoding Scheme(s)	Rich Represent	Related Descrip							
O	O		N	O							
Obligation	Optional										
Condition	[n/a]										
Occurrence	Minimum: 0, Maximum: unbounded										

6.3.21 Collector [dc:creator]

Term Identifier	http://purl.org/dc/elements/1.1/creator
Qualified Name	dc:creator
Defined By	The Dublin Core Metadata Element Set, v1.1 http://purl.org/dc/elements/1.1/
Type of Term	Property (Element)
Source Label	Creator
Label in this DCAP	Collector
Source Definition	An entity primarily responsible for making the content of the resource.
Usage in this DCAP	An entity who gathers (or gathered) the items in a collection together.
Comments for this DCAP	[n/a]
Refines	[n/a]
Refined by	[n/a]

Uses Vocabulary Encoding Scheme	[Value type not specified]				
	Value URI	Value String	Syntax Encoding Scheme(s)	Rich Represent	Related Descrip
	O	M		N	O
Obligation	Optional				
Condition	[n/a]				
Occurrence	Minimum: 0, Maximum: unbounded				

6.3.22 Owner [marcrel:OWN]

Term Identifier	http://www.loc.gov/loc.terms/relators/OWN				
Qualified Name	marcrel:OWN				
Defined By	MARC Relator Codes http://www.loc.gov/loc.terms/relators/				
Type of Term	Property (Element)				
Source Label	Owner				
Label in this DCAP	Owner				
Source Definition	The person or organization that currently owns an item or collection.				
Usage in this DCAP	An entity that has legal possession of the collection.				
Comments for this DCAP	[n/a]				
Refines	[n/a]				
Refined by	[n/a]				
Uses Vocabulary Encoding Scheme	[Value type not specified]				
	Value URI	Value String	Syntax Encoding Scheme(s)	Rich Represent	Related Descrip
	O	M		N	O
Obligation	Optional				
Condition	[n/a]				
Occurrence	Minimum: 0, Maximum: unbounded				

6.3.23 Is Accessed Via [cld:isAccessedVia]

Term Identifier	http://purl.org/cld/terms/isAccessedVia
Qualified Name	cld:isAccessedVia

Defined By	Collection-Level Description Terms http://purl.org/cld/terms/										
Type of Term	Property (Element Refinement)										
Source Label	Resource Identifier										
Label in this DCAP	Is Accessed Via										
Source Definition	A service that provides access to the resource.										
Usage in this DCAP	A service that provides access to the collection.										
Comments for this DCAP	[n/a]										
Refines	dc:relation, Dublin Core Metadata Element Set, v1.1 http://purl.org/dc/elements/1.1/relation										
Refined by	[n/a]										
Uses Vocabulary Encoding Scheme	[Value type not specified] <table border="1" data-bbox="454 846 1026 1018"> <thead> <tr> <th>Value URI</th> <th>Value String</th> <th>Syntax Encoding Scheme(s)</th> <th>Rich Represent</th> <th>Related Descrip</th> </tr> </thead> <tbody> <tr> <td>O</td> <td>M</td> <td></td> <td>N</td> <td>O</td> </tr> </tbody> </table>	Value URI	Value String	Syntax Encoding Scheme(s)	Rich Represent	Related Descrip	O	M		N	O
Value URI	Value String	Syntax Encoding Scheme(s)	Rich Represent	Related Descrip							
O	M		N	O							
Obligation	Optional										
Condition	[n/a]										
Occurrence	Minimum: 0, Maximum: unbounded										

6.3.24 Sub-collection [dcterms:hasPart]

Term Identifier	http://purl.org/dc/terms/hasPart
Qualified Name	dcterms:hasPart
Defined By	Dublin Core Terms http://purl.org/dc/terms/
Type of Term	Property (Element Refinement)
Source Label	Has Part
Label in this DCAP	Sub-collection
Source Definition	The described resource includes the referenced resource either physically or logically.
Usage in this DCAP	A second collection contained within the current collection.
Comments for this DCAP	[n/a]

Refines	dc:relation, Dublin Core Metadata Element Set, v1.1 http://purl.org/dc/elements/1.1/relation				
Refined by	[n/a]				
Uses Vocabulary Encoding Scheme	dcmitype:Collection, DCMI Type Vocabulary http://purl.org/dc/dcmitype/Collection				
	Value URI	Value String	Syntax Encoding Scheme(s)	Rich Represent	Related Descrip
	O	O		N	O
Obligation	Optional				
Condition	[n/a]				
Occurrence	Minimum: 0, Maximum: unbounded				

6.3.25 Super-collection [dcterms:isPartOf]

Term Identifier	http://purl.org/dc/terms/isPartOf				
Qualified Name	dcterms:isPartOf				
Defined By	Dublin Core Terms http://purl.org/dc/terms/				
Type of Term	Property (Element Refinement)				
Source Label	Is Part Of				
Label in this DCAP	Super-collection				
Source Definition	The described resource is a physical or logical part of the referenced resource.				
Usage in this DCAP	A second collection that contains the current collection.				
Comments for this DCAP	[n/a]				
Refines	dc:relation, Dublin Core Metadata Element Set, v1.1 http://purl.org/dc/elements/1.1/relation				
Refined by	[n/a]				
Uses Vocabulary Encoding Scheme	dcmitype:Collection, DCMI Type Vocabulary http://purl.org/dc/dcmitype/Collection				
	Value URI	Value String	Syntax Encoding Scheme(s)	Rich Represent	Related Descrip
	O	O		N	O
Obligation	Optional				
Condition	[n/a]				

Occurrence	Minimum: 0, Maximum: unbounded
-------------------	--------------------------------

6.3.26 Catalogue or description [dc:description]

Term Identifier	http://purl.org/dc/elements/1.1/description														
Qualified Name	dc:description														
Defined By	The Dublin Core Metadata Element Set, v1.1 http://purl.org/dc/elements/1.1/														
Type of Term	Property (Element)														
Source Label	Description														
Label in this DCAP	Catalogue or Description														
Source Definition	An account of the content of the resource.														
Usage in this DCAP	A second collection that describes the current collection (for example, the catalogue for the current collection).														
Comments for this DCAP	[n/a]														
Refines	[n/a]														
Refined by	dcterms:abstract, Dublin Core Terms http://purl.org/dc/terms/abstract														
Uses Vocabulary Encoding Scheme	dcmitype:Collection, DCMI Type Vocabulary http://purl.org/dc/dcmitype/Collection <table border="1" data-bbox="446 1098 1024 1272"> <thead> <tr> <th>Value URI</th> <th>Value String</th> <th>Syntax Encoding Scheme(s)</th> <th>Rich Represent</th> <th>Related Descrip</th> </tr> </thead> <tbody> <tr> <td>O</td> <td>O</td> <td></td> <td>N</td> <td>O</td> </tr> </tbody> </table>					Value URI	Value String	Syntax Encoding Scheme(s)	Rich Represent	Related Descrip	O	O		N	O
Value URI	Value String	Syntax Encoding Scheme(s)	Rich Represent	Related Descrip											
O	O		N	O											
Obligation	Optional														
Condition	[n/a]														
Occurrence	Minimum: 0, Maximum: unbounded														

6.3.27 Associated collection [dc:relation]

Term Identifier	http://purl.org/dc/elements/1.1/relation				
Qualified Name	dc:relation				
Defined By	The Dublin Core Metadata Element Set, v1.1 http://purl.org/dc/elements/1.1/				
Type of Term	Property (Element)				
Source Label	Relation				
Label in this DCAP	Associated collection				
Source Definition	A reference to a related resource.				

Usage in this DCAP	A second collection that is associated with the current collection.				
Comments for this DCAP	[n/a]				
Refines	[n/a]				
Refined by	dcterms:isPartOf, Dublin Core Terms http://purl.org/dc/terms/isPartOf				
Refined by	dcterms:hasPart, Dublin Core Terms http://purl.org/dc/terms/hasPart				
Refined by	dcterms:isReferencedBy, Dublin Core Terms http://purl.org/dc/terms/isReferencedBy				
Refined by	cld:isAccessedVia, Collection-Level Description Terms http://purl.org/cld/terms/isAccessedVia				
Uses Vocabulary Encoding Scheme	dcmitype:Collection, DCMI Type Vocabulary http://purl.org/dc/dcmitype/Collection				
	Value URI	Value String	Syntax Encoding Scheme(s)	Rich Represent	Related Descrip
	O	O		N	O
Obligation	Optional				
Condition	[n/a]				
Occurrence	Minimum: 0, Maximum: unbounded				

6.3.28 Associated publication [dcterms:isReferencedBy]

Term Identifier	http://purl.org/dc/terms/isReferencedBy
Qualified Name	dcterms:isReferencedBy
Defined By	Dublin Core Terms http://purl.org/dc/terms/
Type of Term	Property (Element Refinement)
Source Label	Is Referenced By
Label in this DCAP	Associated publication
Source Definition	The described resource is referenced, cited, or otherwise pointed to by the referenced resource.
Usage in this DCAP	A publication that is based on the use, study, or analysis of the collection.
Comments for this DCAP	[n/a]

Refines	dc:relation, Dublin Core Metadata Element Set, v1.1 http://purl.org/dc/elements/1.1/relation				
Refined by	[n/a]				
Uses Vocabulary Encoding Scheme	[Value type not specified]				
	Value URI	Value String	Syntax Encoding Scheme(s)	Rich Represent	Related Descrip
	O	O		N	O
Obligation	Optional				
Condition	[n/a]				
Occurrence	Minimum: 0, Maximum: unbounded				

6.4 Subject Completeness Indicator Properties

This section lists the properties used in the description of a subject completeness indicator, and describes constraints on the occurrence of statements referencing the properties and on the types of their values.

6.4.1 Completeness Subject [cld:completenessSubject]

Term Identifier	http://purl.org/cld/terms/completenessSubject
Qualified Name	cld:completenessSubject
Defined By	Collection-Level Description Terms http://purl.org/cld/terms/
Type of Term	Property (Element)
Source Label	Completeness Subject
Label in this DCAP	Completeness Subject
Source Definition	The subject area in which a level of completeness is indicated.
Usage in this DCAP	[n/a]
Comments for this DCAP	This property specifies the subject which is associated with a Subject Completeness Indicator. The subject must be drawn from a recognized subject scheme.
Refines	[n/a]
Refined by	[n/a]

Uses Vocabulary Encoding Scheme	dcterms:LCSH, Dublin Core Terms http://purl.org/dc/terms/LCSH				
	Value URI	Value String	Syntax Encoding Scheme(s)	Rich Represent	Related Descrip
	O	M		N	O
Obligation	Optional, but recommended				
Condition	<p>If a Subject Completeness Indicator description contains a statement using the completenessLevel property, exactly one statement using the completenessSubject property is required.</p> <p>If a Subject Completeness Indicator description contains no statement using the completenessLevel property, then no statement using the completenessSubject property is permitted.</p>				
Occurrence	Minimum: 0, Maximum: 1				

6.4.2 Completeness Level [cld:completenessLevel]

Term Identifier	http://purl.org/cld/terms/completenessLevel				
Qualified Name	cld:completenessLevel				
Defined By	Collection-Level Description Terms http://purl.org/cld/terms/				
Type of Term	Property (Element)				
Source Label	Completeness Level				
Label in this DCAP	Completeness Level				
Source Definition	The level of completeness of the collection in the indicated subject area.				
Usage in this DCAP	The level of completeness of the collection in the indicated subject area.				
Comments for this DCAP	<p>This property specifies the level of completeness which is associated with a Subject Completeness Indicator.</p> <p>The subject must be drawn from a recognized scheme for completeness levels.</p>				
Refines	[n/a]				
Refined by	[n/a]				
Uses Vocabulary Encoding Scheme	cld:ConspectusLevel, Collection-Level Description Terms http://purl.org/cld/terms/ConspectusLevel				
	Value URI	Value String	Syntax Encoding Scheme(s)	Rich Represent	Related Descrip
	O	M		N	O
Obligation	Optional, but recommended				
Condition	If a Subject Completeness Indicator description contains a statement using the				

	completenessSubject property, exactly one statement using the completenessLevel property is required. If a Subject Completeness Indicator description contains no statement using the completenessSubject property, then no statement using the completenessLevel property is permitted.
Occurrence	Minimum: 0, Maximum: 1

6.5 Encoding Schemes

This section lists the encoding schemes that are used to constrain the types of values that occur in statements describing collections and subject collection indicators.

6.5.1 Uniform Resource Identifier [dcterms:URI]

Term Identifier	http://purl.org/dc/terms/URI
Qualified Name	dcterms:URI
Defined By	Dublin Core Terms http://purl.org/dc/terms/
Type of Term	Class/Vocabulary Encoding Scheme
Label	Uniform Resource Identifier
Definition	A URI Uniform Resource Identifier
See Also	http://www.ietf.org/rfc/rfc3986.txt
Encoding Scheme for	dc:identifier, Dublin Core Metadata Element Set, v1.1 http://purl.org/dc/elements/1.1/identifier

6.5.2 ISO639-2 [dcterms:ISO639-2]

Term Identifier	http://purl.org/dc/terms/ISO639-2
Qualified Name	dcterms:ISO639-2
Defined By	Dublin Core Terms http://purl.org/dc/terms/
Type of Term	Class/Vocabulary Encoding Scheme
Label	ISO 639-2
Definition	ISO 639-2: Codes for the representation of names of languages.
See Also	http://www.loc.gov/standards/iso639-2/
Encoding Scheme for	dc:language, Dublin Core Metadata Element Set, v1.1 http://purl.org/dc/elements/1.1/language

6.5.3 Collection Type Vocabulary [cld:CollType]

Term Identifier	http://purl.org/cld/terms/CollType
Qualified Name	cld:CollType

Defined By	Collection-Level Description Terms http://purl.org/cld/terms/
Type of Term	Class/Vocabulary Encoding Scheme
Label	Collection Type Vocabulary
Definition	A list of types that categorize the collection according to the nature of the items in the collection.
See Also	http://www.ukoln.ac.uk/metadata/nisomi/colltype/
Encoding Scheme for	dc:type, Dublin Core Metadata Element Set, v1.1 http://purl.org/dc/elements/1.1/type

6.5.4 Collection Description Type Vocabulary [cld:CollDescType]

Term Identifier	http://purl.org/cld/terms/CollDescType
Qualified Name	cld:CollDescType
Defined By	Collection-Level Description Terms http://purl.org/cld/terms/
Type of Term	Class/Vocabulary Encoding Scheme
Label	Collection Description Type Vocabulary
Definition	A list of types that categorize the collection description according to its nature.
See Also	http://www.ukoln.ac.uk/metadata/nisomi/colldescstype/
Encoding Scheme for	dc:type, Dublin Core Metadata Element Set, v1.1 http://purl.org/dc/elements/1.1/type

6.5.5 DCCD Accrual Method [cld:DCCDAccrualMethod]

Term Identifier	http://purl.org/cld/terms/DCCDAccrualMethod
Qualified Name	cld:DCCDAccrualMethod
Defined By	Collection-Level Description Terms http://purl.org/cld/terms/
Type of Term	Class/Vocabulary Encoding Scheme
Label	DCCD Accrual Method
Definition	Methods by which items are added to a collection.
See Also	http://www.ukoln.ac.uk/metadata/dcmi/collection-DCCDAccrualMethod/
Encoding Scheme for	dcterms:accrualMethod, Dublin Core Terms http://purl.org/dc/terms/accrualMethod

6.5.6 DCCD Accrual Periodicity [cld:DCCDAccrualPeriodicity]

Term Identifier	http://purl.org/cld/terms/DCCDAccrualPeriodicity
Qualified Name	cld:DCCDAccrualPeriodicity

Defined By	Collection-Level Description Terms http://purl.org/cld/terms/
Type of Term	Class/Vocabulary Encoding Scheme
Label	DCCD Accrual Periodicity
Definition	Frequencies with which items are added to a collection.
See Also	http://www.ukoln.ac.uk/metadata/dcmi/collection-DCCDAccrualPeriodicity/
Encoding Scheme for	dcterms:accrualPeriodicity, Dublin Core Terms http://purl.org/dc/terms/accrualPeriodicity

6.5.7 DCCD Accrual Policy [cld:DCCDAccrualPolicy]

Term Identifier	http://purl.org/cld/terms/DCCDAccrualPolicy
Qualified Name	dcterms:DCCDAccrualPolicy
Defined By	Collection-Level Description Terms http://purl.org/cld/terms/
Type of Term	Class/Vocabulary Encoding Scheme
Label	DCCD Accrual Policy
Definition	Policies governing the addition of items to a collection.
See Also	http://www.ukoln.ac.uk/metadata/dcmi/collection-DCCDAccrualPolicy/
Encoding Scheme for	dcterms:accrualPolicy, Dublin Core Terms http://purl.org/dc/terms/accrualPolicy

6.5.8 Library of Congress Subject Headings (LCSH) [dcterms:LCSH]

Term Identifier	http://purl.org/dc/terms/LCSH
Qualified Name	dcterms:LCSH
Defined By	Dublin Core Terms http://purl.org/dc/terms/
Type of Term	Class/Vocabulary Encoding Scheme
Label	LCSH
Definition	Library of Congress Subject Headings.
See Also	http://lcweb.loc.gov/cds/lcsh.html
Encoding Scheme for	dc:subject, Dublin Core Metadata Element Set, v1.1 http://purl.org/dc/elements/1.1/subject
Encoding Scheme for	cld:completenessSubject, Collection-Level Description Terms http://purl.org/cld/terms/completenessSubject

6.5.9 Library of Congress Classification (LCC) [dcterms:LCC]

Term Identifier	http://purl.org/dc/terms/LCC
Qualified Name	dcterms:LCC
Defined By	Dublin Core Terms http://purl.org/dc/terms/
Type of Term	Class/Vocabulary Encoding Scheme
Label	LCC
Definition	Library of Congress Classification.
See Also	http://lcweb.loc.gov/catdir/cpso/lcco/lcco.html
Encoding Scheme for	dc:subject, Dublin Core Metadata Element Set, v1.1 http://purl.org/dc/elements/1.1/subject

6.5.10 Medical Subject Headings (MESH) [dcterms:MESH]

Term Identifier	http://purl.org/dc/terms/MESH
Qualified Name	dcterms:MESH
Type of Term	Class/Vocabulary Encoding Scheme
Defined By	Dublin Core Terms http://purl.org/dc/terms/
Label	MeSH
Definition	Medical Subject Headings.
See Also	http://www.nlm.nih.gov/mesh/meshhome.html
Encoding Scheme for	dc:subject, Dublin Core Metadata Element Set, v1.1 http://purl.org/dc/elements/1.1/subject

6.5.11 Dewey Decimal Classification (DDC) [dcterms:DDC]

Term Identifier	http://purl.org/dc/terms/DDC
Qualified Name	dcterms:DDC
Defined By	Dublin Core Terms http://purl.org/dc/terms/
Type of Term	Class/Vocabulary Encoding Scheme
Label	DDC
Definition	Dewey Decimal Classification.
See Also	http://www.oclc.org/dewey/
Encoding Scheme for	dc:subject, Dublin Core Metadata Element Set, v1.1 http://purl.org/dc/elements/1.1/subject

6.5.12 Universal Decimal Classification (UDC) [dcterms:UDC]

Term Identifier	http://purl.org/dc/terms/UDC
Qualified Name	dcterms:UDC
Defined By	Dublin Core Terms http://purl.org/dc/terms/
Type of Term	Class/Vocabulary Encoding Scheme
Label	UDC
Definition	Universal Decimal Classification.
See Also	http://www.udcc.org/
Encoding Scheme for	dc:subject, Dublin Core Metadata Element Set, v1.1 http://purl.org/dc/elements/1.1/subject

6.5.13 Recordkeeping Metadata Schema Extension to ISO8601 [cld:RKMS-ISO8601]

Term Identifier	http://purl.org/cld/terms/RKMS-ISO8601
Qualified Name	cld:RKMS-ISO8601
Defined By	Collection-Level Description Terms http://purl.org/cld/terms/
Type of Term	Class/Vocabulary Encoding Scheme
Label	Recordkeeping Metadata Schema Extension to ISO8601
Definition	Instances of this class are dates or periods of time represented as literals according to the rules specified in Recordkeeping Metadata Schema Extension to ISO8601.
See Also	http://www.sims.monash.edu.au/research/rcrg/research/spirt/deliver/schemes.html
Encoding Scheme for	cld:dateContentsCreated, Collection-Level Description Terms http://purl.org/cld/terms/dateContentsCreated
Encoding Scheme for	dcterms:created, Dublin Core Terms http://purl.org/dc/terms/created

6.5.14 Collection [dcmitype:Collection]

Term Identifier	http://purl.org/dc/dcmitype/Collection
Qualified Name	dcmitype:Collection
Defined By	DCMI Type Vocabulary http://purl.org/dc/dcmitype/
Type of Term	Class/Vocabulary Encoding Scheme
Label	Collection

Definition	A collection is an aggregation of items. The term collection means that the resource is described as a group; its parts may be separately described and navigated.
See Also	[n/a]
Encoding Scheme for	dcterms:hasPart, Dublin Core Terms http://purl.org/dc/terms/hasPart
Encoding Scheme for	dcterms:isPartOf, Dublin Core Terms http://purl.org/dc/terms/isPartOf
Encoding Scheme for	dc:description, Dublin Core Metadata Element Set, v1.1 http://purl.org/dc/elements/1.1/description
Encoding Scheme for	dc:relation, Dublin Core Metadata Element Set, v1.1 http://purl.org/dc/elements/1.1/relation

6.5.15 Subject Completeness Indicator [cld:SCI]

Term Identifier	http://purl.org/cld/terms/SCI
Qualified Name	cld:SCI
Defined By	Collection-Level Description Terms http://purl.org/cld/terms/
Type of Term	Class/Vocabulary Encoding Scheme
Label	Subject Completeness Indicator
Definition	A Subject Completeness Indicator is a measure of the depth of a collection in relation to a specified subject area.
Comments	A Subject Completeness Indicator specifies: <ul style="list-style-type: none"> – a subject, which must be from a recognized subject scheme, and – a level of completeness, which should be from a recognized scheme, such as a Conspectus Level.
See Also	http://www.ukoln.ac.uk/metadata/nisomi/SubjectCompletenessIndicator/
Encoding Scheme for	cld:subjectCompleteness, Collection-Level Description Terms http://purl.org/cld/terms/subjectCompleteness

6.5.16 Conspectus Level [cld:ConspectusLevel]

Term Identifier	http://purl.org/cld/terms/ConspectusLevel
Qualified Name	cld:ConspectusLevel
Defined By	Collection-Level Description Terms http://purl.org/cld/terms/
Type of Term	Encoding Scheme
Label	Conspectus Level
Definition	A set of six numeric values used to indicate the completeness of a collection in

	a specified subject area.
See Also	http://www.ukoln.ac.uk/metadata/nisomi/ConspectusLevel/
Encoding Scheme for	cld:completenessLevel, Collection-Level Description Terms http://purl.org/cld/terms/completenessLevel

6.6 Collection Type Vocabulary (cld:CollType)

This section lists the classes that make up the Collection Type Vocabulary, and which may be referenced as values in statements using the dc:type property in a description of a collection. These classes have a one-to-one correspondence with the classes of the DCMI Type Vocabulary.

6.6.1 Collection of Collections [colltype:CollectionCollection]

Term Identifier	http://purl.org/cld/collection/type/CollectionCollection
Qualified Name	colltype:CollectionCollection
Defined By	Collection Type Vocabulary http://purl.org/cld/collection/type/
Type of Term	Class
Label	Collection of Collections
Definition	A collection of items that are of type Collection, where a Collection is an aggregation of items; i.e. a collection of collections.
Comments	[n/a]
See Also	[n/a]
SubClass Of	dcmitype:Collection, Dublin Core Type Vocabulary http://purl.org/dc/dcmitype/Collection

6.6.2 Collection of Datasets [colltype:CollectionDataset]

Term Identifier	http://purl.org/cld/collection/type/CollectionDataset
Qualified Name	colltype:CollectionDataset
Defined By	Collection Type Vocabulary http://purl.org/cld/collection/type/
Type of Term	Class
Label	Collection of Datasets
Definition	A collection of items of type Dataset where a Dataset is information encoded in a defined structure (for example, lists, tables, and databases), intended to be useful for direct machine processing.
Comments	[n/a]
See Also	[n/a]
SubClass Of	dcmitype:Collection, Dublin Core Type Vocabulary http://purl.org/dc/dcmitype/Collection

6.6.3 Collection of Events [colltype:CollectionEvent]

Term Identifier	http://purl.org/cld/collection/type/CollectionEvent
Qualified Name	colltype:CollectionEvent
Defined By	Collection Type Vocabulary http://purl.org/cld/collection/type/
Type of Term	Class
Label	Collection of Events
Definition	A collection of items of type Event where an Event is a non-persistent, time-based occurrence.
Comments	[n/a]
See Also	[n/a]
SubClass Of	dcmitype:Collection, Dublin Core Type Vocabulary http://purl.org/dc/dcmitype/Collection

6.6.4 Collection of Images [colltype:CollectionImage]

Term Identifier	http://purl.org/cld/collection/type/CollectionImage
Qualified Name	colltype:CollectionImage
Defined By	Collection Type Vocabulary http://purl.org/cld/collection/type/
Type of Term	Class
Label	Collection of Images
Definition	A collection of items of type Image, where an Image is a primarily symbolic visual representation other than text. For example: images and photographs of physical objects, paintings, prints, drawings, other images and graphics, animations and moving pictures, film, diagrams, maps, or musical notation. Note that Image may include both electronic and physical representations.
Comments	[n/a]
See Also	[n/a]
SubClass Of	dcmitype:Collection, Dublin Core Type Vocabulary http://purl.org/dc/dcmitype/Collection

6.6.5 Collection of Moving Images [colltype:CollectionMovingImage]

Term Identifier	http://purl.org/cld/collection/type/CollectionMovingImage
Qualified Name	colltype:CollectionMovingImage
Defined By	Collection Type Vocabulary http://purl.org/cld/collection/type/
Type of Term	Class
Label	Collection of Moving Images

Definition	A collection of items of type Moving Image, where a Moving Image is a series of visual representations that, when shown in succession, impart an impression of motion. For example, an animation, movie, television, video, zoetrope, or visual output from a simulation.
Comments	[n/a]
See Also	[n/a]
SubClass Of	colltype:CollectionImage, Collection Type Vocabulary http://purl.org/cld/collection/type/CollectionImage

6.6.6 Collection of Still Images [colltype:CollectionStillImage]

Term Identifier	http://purl.org/cld/collection/type/CollectionStillImage
Qualified Name	colltype:CollectionStillImage
Defined By	Collection Type Vocabulary http://purl.org/cld/collection/type/
Type of Term	Class
Label	Collection of Still Images
Definition	A collection of items of type Still Image, where a Still Image is a static visual representation other than text. For example, a picture, photograph, painting, drawing, graphic design, plan, map, or musical score. Note that a Still Image may be manifested in physical and electronic forms.
Comments	[n/a]
See Also	[n/a]
SubClass Of	colltype:CollectionImage, Collection Type Vocabulary http://purl.org/cld/collection/type/CollectionImage

6.6.7 Collection of Interactive Resources [colltype:CollectionInteractiveResource]

Term Identifier	http://purl.org/cld/collection/type/CollectionInteractiveResource
Qualified Name	colltype:CollectionInteractiveResource
Defined By	Collection Type Vocabulary http://purl.org/cld/collection/type/
Type of Term	Class
Label	Collection of Interactive Resources
Definition	A collection of items of type Interactive Resource, where an interactive resource is a resource which requires interaction from the user to be understood, executed, or experienced. For example, forms on web pages, applets, multimedia learning objects, chat services, or virtual reality.
Comments	[n/a]
See Also	[n/a]
SubClass Of	dcmitype:Collection, Dublin Core Type Vocabulary

	http://purl.org/dc/dcmitype/Collection
--	---

6.6.8 Collection of Physical Objects [colltype:CollectionPhysicalObject]

Term Identifier	http://purl.org/cld/collection/type/CollectionPhysicalObject
Qualified Name	colltype:CollectionPhysicalObject
Defined By	Collection Type Vocabulary http://purl.org/cld/collection/type/
Type of Term	Class
Label	Collection of Physical Objects
Definition	A collection of items of type Physical Object, where a Physical Object is an inanimate, three-dimensional object or substance. For example, a computer, the great pyramid, or a sculpture.
Comments	[n/a]
See Also	[n/a]
SubClass Of	dcmitype:Collection, Dublin Core Type Vocabulary http://purl.org/dc/dcmitype/Collection

6.6.9 Collection of Services [colltype:CollectionService]

Term Identifier	http://purl.org/cld/collection/type/CollectionService
Qualified Name	colltype:CollectionService
Defined By	Collection Type Vocabulary http://purl.org/cld/collection/type/
Label	Collection of Services
Type of Term	Class
Definition	A collection of items of type Service, where a Service is a system that provides one or more functions of value to the end-user. Examples of Services include: a photocopying service, a banking service, an authentication service, interlibrary loans, or a Z39.50 or Web server.
Comments	[n/a]
See Also	[n/a]
SubClass Of	dcmitype:Collection, Dublin Core Type Vocabulary http://purl.org/dc/dcmitype/Collection

6.6.10 Collection of Software [colltype:CollectionSoftware]

Term Identifier	http://purl.org/cld/collection/type/CollectionSoftware
Qualified Name	colltype:CollectionSoftware
Defined By	Collection Type Vocabulary http://purl.org/cld/collection/type/

Type of Term	Class
Label	Collection of Software
Definition	A collection of items of type Software, where Software is a computer program in source or compiled form which may be available for installation non-transiently on another machine.
Comments	[n/a]
See Also	[n/a]
SubClass Of	dcmitype:Collection, Dublin Core Type Vocabulary http://purl.org/dc/dcmitype/Collection

6.6.11 Collection of Sounds [colltype:CollectionSound]

Term Identifier	http://purl.org/cld/collection/type/CollectionSound
Qualified Name	colltype:CollectionSound
Defined By	Collection Type Vocabulary http://purl.org/cld/collection/type/
Type of Term	Class
Label	Collection of Sounds
Definition	A collection of items of type Sound, where a Sound is a resource whose content is primarily intended to be rendered as audio. For example, a music playback file format, an audio compact disc, or recorded speech or sounds.
Comments	[n/a]
See Also	[n/a]
SubClass Of	dcmitype:Collection, Dublin Core Type Vocabulary http://purl.org/dc/dcmitype/Collection

6.6.12 Collection of Texts [colltype:CollectionText]

Term Identifier	http://purl.org/cld/collection/type/CollectionText
Qualified Name	colltype:CollectionText
Defined By	Collection Type Vocabulary http://purl.org/cld/collection/type/
Type of Term	Class
Label	Collection of Texts
Definition	A collection of items of type Text, where a Text is a resource whose content is primarily words for reading. For example, books, letters, dissertations, poems, newspapers, articles, or archives of mailing lists. Note that facsimiles or images of texts are still of the genre text.
Comments	[n/a]
See Also	[n/a]

SubClass Of	dcmitype:Collection, Dublin Core Type Vocabulary http://purl.org/dc/dcmitype/Collection
--------------------	---

6.7 Collection Description Type Vocabulary (cld:CollDescType)

This section lists the classes that make up the Collection Description Type Vocabulary, which may be referenced as values in statements using the dc:type property in a description of a collection to indicate that the subject collection is itself a description of a second collection. These classes correspond to the subtypes of collection description listed in *An Analytical Model of Collections and their Catalogues* [AMCC]

6.7.1 Catalogue [colldesctype:Catalogue]

Term Identifier	http://purl.org/cld/collection/type/Catalogue
Qualified Name	colldesctype:Catalogue
Defined By	Collection Description Type Vocabulary http://purl.org/cld/collection/type/
Type of Term	Class
Label	Catalogue
Definition	A collection of individual records describing the items, and the intellectual content of those items, of a second collection. There may, in the individual records, be information about collections, but that is not the focus of the catalogue. Catalogues are typically created with significant human input.
Comments	[n/a]
See Also	An Analytical Model of Collections and their Catalogues http://www.ukoln.ac.uk/metadata/rslp/model/
SubClass Of	dcmitype:Collection, Dublin Core Type Vocabulary http://purl.org/dc/dcmitype/Collection

6.7.2 Hierarchic Finding Aid [colldesctype:HierarchicFindingAid]

Term Identifier	http://purl.org/cld/collection/type/HierarchicFindingAid
Qualified Name	colldesctype:HierarchicFindingAid
Defined By	Collection Description Type Vocabulary http://purl.org/cld/collection/type/
Type of Term	Class
Label	Hierarchic Finding Aid
Definition	A collection of records describing the individual items, and the intellectual content of those items, of a second collection. The records are firmly grounded within the overall arrangement of the collection, e.g. grouping together all the letters, account books etc. in an ordered sequence or sequences. Items are often not uniquely identifiable when considered in isolation, so the context of the collection is an essential element in compiling the hierarchic finding-aid. Hierarchic finding-aids are typically created with significant human input.

Comments	[n/a]
See Also	An Analytical Model of Collections and their Catalogues http://www.ukoln.ac.uk/metadata/rsip/model/
SubClass Of	dcmitype:Collection, Dublin Core Type Vocabulary http://purl.org/dc/dcmitype/Collection

6.7.3 Index [colldesctype:Index]

Term Identifier	http://purl.org/cld/collection/type/Index
Qualified Name	colldesctype:Index
Defined By	Collection Description Type Vocabulary http://purl.org/cld/collection/type/
Type of Term	Class
Label	Index
Definition	A collection of records consisting of information derived from items in a second collection, regardless of the content of those items. By this is meant that an index—for example a robotic search engine—will index the words in a document (or catalogue record) regardless of their context and without trying to identify the discrete elements of intellectual content contained therein. Indexes are typically generated automatically by a software robot or other harvesting technology.
Comments	[n/a]
See Also	An Analytical Model of Collections and their Catalogues http://www.ukoln.ac.uk/metadata/rsip/model/
SubClass Of	dcmitype:Collection, Dublin Core Type Vocabulary http://purl.org/dc/dcmitype/Collection

7 XML Binding: The nismcd XML format

The `nismcd` XML format is an XML format that supports the encoding of DC metadata description sets conforming to the *Collection Description Specification*.

7.1 Description Sets

The XML element with the qualified name `nismcd:nismcd` (where the prefix "nismcd" is bound to the XML Namespace Name <http://purl.org/cld/nismcd/xml/>) represents a Dublin Core metadata *description set*.

7.2 Descriptions

Each child XML element of the `nismcd:nismcd` XML element represents a DC metadata *description*.

Each XML element with the qualified name `nisomcd:colDescription` represents a *description* of a collection. A `nisomcd:colDescription` XML element may have a `descId` attribute.

Each XML element with the qualified name `nisomcd:sciDescription` represents a *description* of a "subject completeness indicator". A `nisomcd:sciDescription` XML element may have a `descId` attribute.

7.3 Statements

Each child XML element of the `nisomcd:colDescription` XML element corresponds to a *statement* about the collection.

Each child XML element of the `nisomcd:sciDescription` XML element corresponds to a *statement* about the subject completeness indicator.

7.4 Properties and Property URIs

Properties are referenced in DC metadata using URIs. In the `nisomcd` XML format, the *property URI* is represented as the qualified name of the XML element representing the statement. The URI represented by an XML QName is obtained by appending the local-part of the XML QName to the XML Namespace Name. For any given URI, there may be zero or more possible XML QName representations; for ease of human readability, it is recommended that the qualified names listed in the tables above be used.

7.5 Values and Value Representations

A *value string* is encoded as the content of the XML element representing the statement.

A *value URI* is encoded as the value of the `valueURI` XML attribute of the XML element representing the statement.

A *vocabulary encoding scheme URI* is encoded as the value of the `vencSchemeURI` XML attribute of the XML element representing the statement.

A *related description* for a value is indicated using the `descrRef` XML attribute of the XML element representing the statement; the value of the `descrRef` attribute should be the same as that of a `descId` attribute of a `nisomcd:colDescription` or `nisomcd:sciDescription` XML element within the same document. It is an error if the value of the `descrRef` attribute does not match a value of a `descId` attribute in the same XML document.

Appendix A

(informative)

W3C XML Schemas for the nismcd XML Format

A.1. Introduction

A set of W3C XML Schemas to support the use of the `nismcd` XML format is available. Other W3C XML Schemas may also be used.

A.2. W3C XML Schemas

The primary XML Schema for the `nismcd` XML format is:

- **nismcd.xsd:**
<http://www.ukoln.ac.uk/metadata/nisomi/cd-xml/2005-08-21/xmls/nismcd.xsd>
 (target XML Namespace Name <http://purl.org/cld/nismcd/xml/>)

That schema imports the following schemas:

- **dc.xsd:**
<http://www.ukoln.ac.uk/metadata/nisomi/cd-xml/2005-08-21/xmls/dc.xsd>
 (target XML Namespace Name <http://purl.org/dc/elements/1.1/>)
- **dcterms.xsd:**
<http://www.ukoln.ac.uk/metadata/nisomi/cd-xml/2005-08-21/xmls/dcterms.xsd>
 (target XML Namespace Name <http://purl.org/dc/terms/>)
- **cldterms.xsd:**
<http://www.ukoln.ac.uk/metadata/nisomi/cd-xml/2005-08-21/xmls/cldterms.xsd>
 (target XML Namespace Name <http://purl.org/cld/terms/>)
- **marcrel.xsd:**
<http://www.ukoln.ac.uk/metadata/nisomi/cd-xml/2005-08-21/xmls/marcrel.xsd>
 (target XML Namespace Name <http://www.loc.gov/loc/terms/relators/>)

Latest versions of the schemas are available from:

- **dc.xsd:**
<http://www.ukoln.ac.uk/metadata/nisomi/cd-xml/xmls/dc.xsd>
 (target XML Namespace Name <http://purl.org/dc/elements/1.1/>)
- **dcterms.xsd:**
<http://www.ukoln.ac.uk/metadata/nisomi/cd-xml/xmls/dcterms.xsd>
 (target XML Namespace Name <http://purl.org/dc/terms/>)
- **cldterms.xsd:**
<http://www.ukoln.ac.uk/metadata/nisomi/cd-xml/xmls/cldterms.xsd>
 (target XML Namespace Name <http://purl.org/cld/terms/>)
- **marcrel.xsd:**
<http://www.ukoln.ac.uk/metadata/nisomi/cd-xml/xmls/marcrel.xsd>
 (target XML Namespace Name <http://www.loc.gov/loc/terms/relators/>)

NOTE: implementers are advised to exercise caution in using this latter set of URIs in instance documents since changes to the schemas are **not** guaranteed to be backwards compatible.

Recommended practice is to refer to a "date-stamped" version.

Bibliography

RSLP Collection Description Schema

<http://www.ukoln.ac.uk/metadata/rsip/schema/>

Powell, Andy, Mikael Nilsson, Ambjörn Naeve, Pete Johnston. *DCMI Abstract Model*. DCMI Recommendation.

<http://dublincore.org/documents/abstract-model/>

CEN CWA 14855 Dublin Core Application Profile guidelines